

---

# UNIWEBSITE

The web solution for remote time management



Unitime, our time management system, benefits from its own web module: UniwebTime.

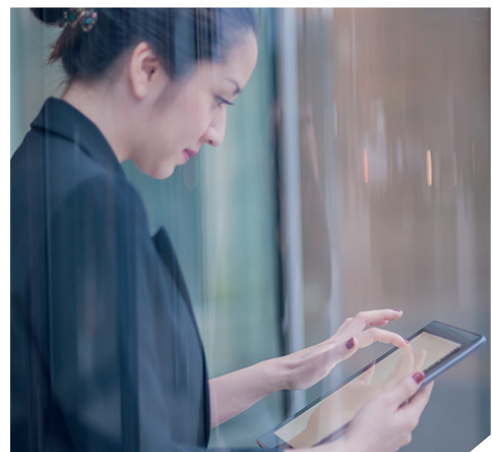
UniwebTime executes all Unitime's tasks locally, enabling all your employees to enter new leave requests, check their available credit, clock in and out virtually, view their attendance and absence history and hours worked.

Missions and leave can be requested or allocated directly via the web platform. Supervisors receive automatic e-mail notifications and can decide whether or not to grant the employee's request.

The tool enables the simple and fast viewing, management and processing of the information contained in the Unitime time management engine via an ultra-thin client running a standard PC browser.

## WHY UNIWEBSITE?

- Viewing leave requests and visualising your organisation's key indicators in graphical form with just a few clicks
- Simplified management and modifications in the event of unplanned absences
- Exporting data collected via the web to Unitime, with transfers to your social security authority.
- Report generation



## WHY A WEB PLATFORM?

- Employee autonomy (self-service: enter absences, consult balances, etc.)
- Ease of use
- Portable (multiplatform)
- Dynamic, customisable interface
- Mobile: a browser is enough to make any device into a client (tablet PC, mobile phone, etc.)
- Easily scalable solution
- Less unwieldy (reduce your extension costs by favouring the Web: no more need for time clocks)
- Easy implementation of consultation terminals
- Improved human resource management
- Improved reliability of shared information (presence lists, schedules, etc.)
- Direct data monitoring both at the central and local level
- No upgrade procedures: all changes are implemented directly on the server and immediately available to users



Rue Saucin, 62  
5032 Isnes – BELGIUM

T +32 (0)81 55 46 10  
F +32 (0)81 55 97 69

Franklin Rooseveltlaan 349/B. 22  
9000 Gent – BELGIUM

T +32 (0)9 262 03 14  
F +32 (0)9 265 02 50